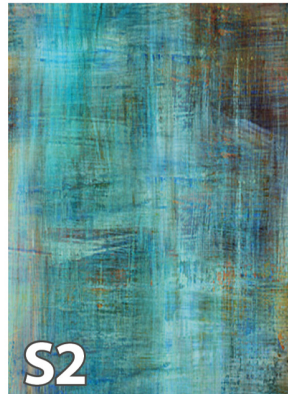


## BACKGROUNDS



# Spring PICTURES

SPRING ORDERS ARE PREPAID!!!  
YOU DO NOT GET A PROOF FOR SPRING!!!  
Please send in the form with your student  
on picture day.



5x7 & 8x10 Border Prints



Wallet Magnets (4)



Mouse Pad



8x10 Class group



Mother of Pearl  
Necklace



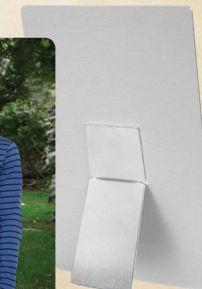
Ceramic Mug



Luggage Tag



4x6 Aluminum Desk Print



Deluxe Keychain

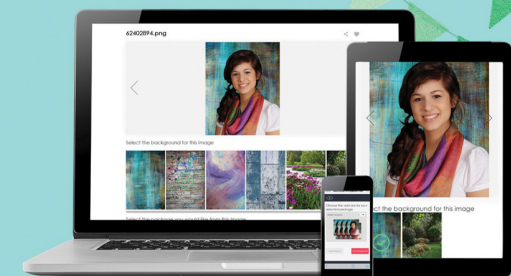


Magnet

## ORDER Online NOW!

Using your computer, tablet, or mobile phone!

[www.lynnbrownphotography.hhimagehost.com](http://www.lynnbrownphotography.hhimagehost.com)







SPRING ORDERS ARE PREPAID!!!

YOU WILL NOT GET A PROOF FOR  
SPRING PICTURES!

Order online and send in the form  
with your student on picture day!

OR

Please send in the  
form with check or exact change  
with your student  
on picture day.

PACKAGE A

\$59

2 - 8x10 individuals & 1-8x10 class group  
2 - 5x7  
4 - 3½x5  
8 - 2½x3½ Wallets



PACKAGE B

\$38

1 - 8x10  
2 - 5x7  
2 - 3½x5  
4 - 2½x3½ Wallets

Digital  
Download  
INCLUDED!



PACKAGE C

\$29

2 - 5x7  
4 - 3½x5  
4 - 2½x3½ Wallets

PACKAGE D

\$22

1 - 5x7 & 4 - 3½x5

PACKAGE Y

\$20

1- 8x10 Class Picture

Add-On Items

| Pkg | Qty | Description              | Price | Pkg | Qty | Description             | Price | Pkg | Qty | Description                                       | Price |
|-----|-----|--------------------------|-------|-----|-----|-------------------------|-------|-----|-----|---|-------|
| E   | 1   | 8x10 Border Print        | \$19  | L   | 1   | Ceramic Mug             | \$18  | T   | 4   | 3½x5 Prints                                       | \$18  |
| F   | 1   | 5x7 Border Print         | \$10  | M   | 1   | Calendar Magnet         | \$18  | U   | 2   | 5x7 Prints  | \$18  |
| G   | 1   | Neoprene Mouse Pad       | \$15  | N   | 1   | 3" Round Magnet         | \$9   | V   | 1   | 8x10 Print  | \$18  |
| H   | 1   | 4x6 Aluminum Desk Print  | \$20  | P   | 1   | Luggage Tag             | \$10  | W   | 1   | 10x13 Print                                       | \$25  |
| J   | 1   | Mother of Pearl Necklace | \$15  | Q   | 4   | 2½x3½ Wallet Magnets    | \$12  | X   | 1   | Digital Download<br>(unlimited copyright release) | \$29  |
| K   | 1   | Deluxe Keychain          | \$12  | R   | 1   | 4x5 Magnet (image only) | \$11  | Y   | 1   | 8x10 Class Picture                                | \$18  |
| L   | 1   | Ceramic Mug              | \$18  | S   | 8   | 2½x3½ Wallets           | \$18  |     |     |   |       |

Backgrounds

If no background is selected, S1 will be used.



▲ Please remove envelope at perforation and insert check or cash for payment. Moisten the glue strip and seal.▲

| Bkgd. | Pkg | Print Packages | Qty | Price | Total |
|-------|-----|----------------|-----|-------|-------|
|       | A   | Package A      |     | \$59  | \$    |
|       | B   | Package B      |     | \$38  | \$    |
|       | C   | Package C      |     | \$29  | \$    |
|       | D   | Package D      |     | \$22  | \$    |
|       | Y   | Package Y      |     | \$20  | \$    |
|       |     |                |     |       | \$    |

| Bkgd. | Pkg | Add-On Items | Qty | Price | Total |
|-------|-----|--------------|-----|-------|-------|
|       |     |              |     |       | \$    |
|       |     |              |     |       | \$    |
|       |     |              |     |       | \$    |
|       |     |              |     |       | \$    |
|       |     |              |     |       | \$    |
|       |     |              |     |       | \$    |

Choose crop ☐ 3/4 view (Default)  
☐ head and shoulder \$

TOTAL ENCLOSED: \$

Student Information  
(please write legibly)

First Name: \_\_\_\_\_  
Last Name: \_\_\_\_\_  
Teacher: \_\_\_\_\_  
Homeroom: \_\_\_\_\_  
Grade: \_\_\_\_\_  
School: \_\_\_\_\_

Parent Information  
(please write legibly)

Name: \_\_\_\_\_  
Phone: \_\_\_\_\_  
Email: \_\_\_\_\_

Order Online

Place your order securely online at:

www.lynnbrownphotography.hhimagehost.com

Make checks payable to:  
Lynn Brown Photography

Dishonored checks are subject to  
electronic recovery and a processing fee.  
Use of a check as payment is your express  
authorization of this policy and terms.